

Year 1 and 2 Home Learning Week Commencing 15th June 2020

Writing

Watch and listen to the story of "Rumble in the Jungle" by Giles Andreae. Follow this link <https://www.youtube.com/watch?v=D2-O1LkCzpM> or search for the story Rumble in the Jungle on YouTube. Identify the rhyming words in the opening pages of the book and see if you can spot any alliteration. Alliteration is the repetition of the sound at the beginning of two or more neighbouring words eg wild and woolly or babbling brook

Task 1

Write a four- line poem about an animal of your choice using "Rumble in the Jungle" to inspire you.

Task 2

Choose two of the animals included in the Rainforest Habitats powerpoint on the Home Learning page and make a factfile about them. Double click on the powerpoint to open. You could include information about where they live, what they eat, how they move and their size and features for example. See if you can find more facts in any information books you may have or look up more information on the internet.

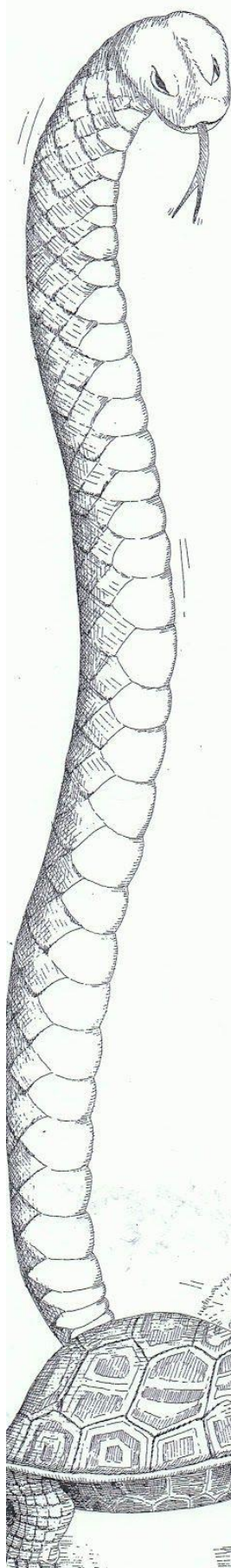
Reading

Read the following poem with an adult and answer the following questions:

How do cats move?

How do panthers move?

How do gulls move?



Animal Movements

Snakes slither
and cats creep.
Spiders spin
and leopards leap.

Turtles trudge
and bunnies bounce.
Falcons fly
and panthers pounce.

Hummingbirds hover
and fish flop.
Gulls glide
and hares hop.

Leslie Tryon

Geography

LO To find out where in the world the rainforests are located

Watch the powerpoint to find out more about the rainforests and where they are in the world.

If you are able to print a world map please shade in the places where the rainforests are located.

ART

L.O: To revise use of colour and line from earlier in the year

Task 1: Look at some pictures of the sloth on the Home Learning page. Look at the texture and colour of its fur. Experiment with making the right colour using paints/crayons or coloured pencils. Can you use the work we did on line earlier in the year to create the texture of fur (short/thick lines, thin/fat lines, curved/straight lines etc)?

Either draw and paint/colour/collage a picture of a sloth OR use the outline sheet provided.

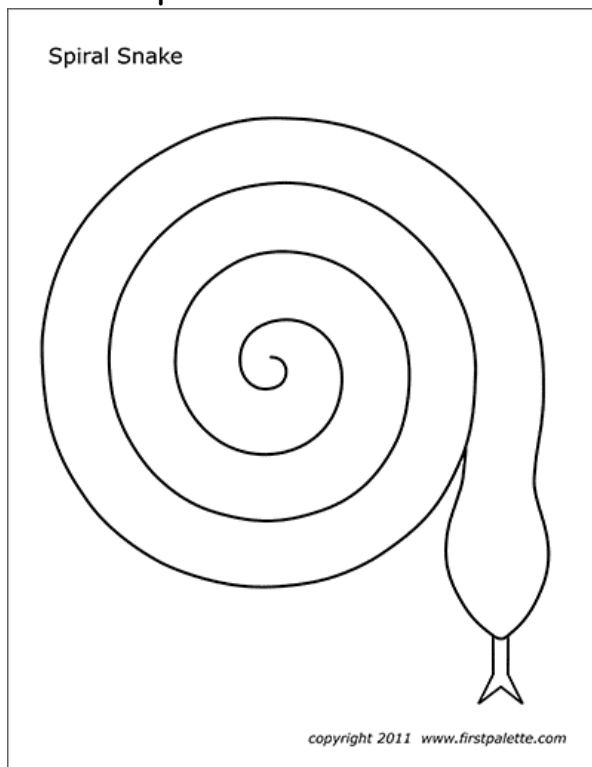
Ask someone to take a photograph of your face and cut it out. Stick the photograph onto your sloth's head.



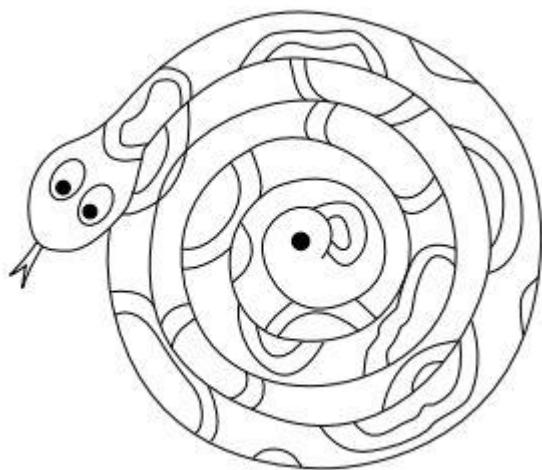
Now hang your personalised sloth up in your classroom/bedroom, wherever you choose.

Task 2

Draw a spiral snake as shown below.



Use different lines to make a repeating pattern over your snake's body. Look at the examples for some ideas.



Colour your snake in and then cut around and around so that your snake's body stretches out.



Hang him up with your sloth.

You could try some other ways to make your snake. You could use pebbles or twigs for example and arrange them in a spiral. Be as imaginative as you like!

DT

LO To cut and join different materials

Make a rain stick using a kitchen roll tube, glue, paper and rubber bands/cellotape. Use a plain piece of paper and decorate using animal print or rainforest leaves (there are some ideas below) and stick around your kitchen roll tube. Cover one end of your tube with a paper circle then add rice or dried beans and finish by adding a

circle of paper to the open end. You have now created your rain maker.

Please follow the link below to help you or search "how to make a rainmaker" on YouTube.

https://www.youtube.com/results?search_query=%23rainmaker

Below are some ideas for your animal print pattern.



Or rainforest leaves



Music

LO To create a piece of mood music

Create a piece of music that reflects the rainforest sounds.

Click on the link below to listen to the sounds of the rainforest or search sounds of the rainforest. You can alter the different sound layers by sliding the dials.

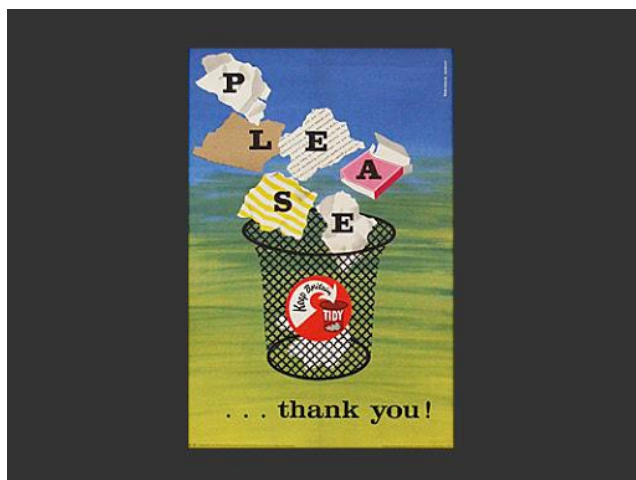
<https://mynoise.net/NoiseMachines/rainforestNoiseGenerator.php>

Now have a try yourself to make the sounds of the rainforest. This could include using your voice, a drum or pots and pans and a wooden spoon or using objects/instruments you find in your home or classroom. Don't forget to use your rainmaker too.

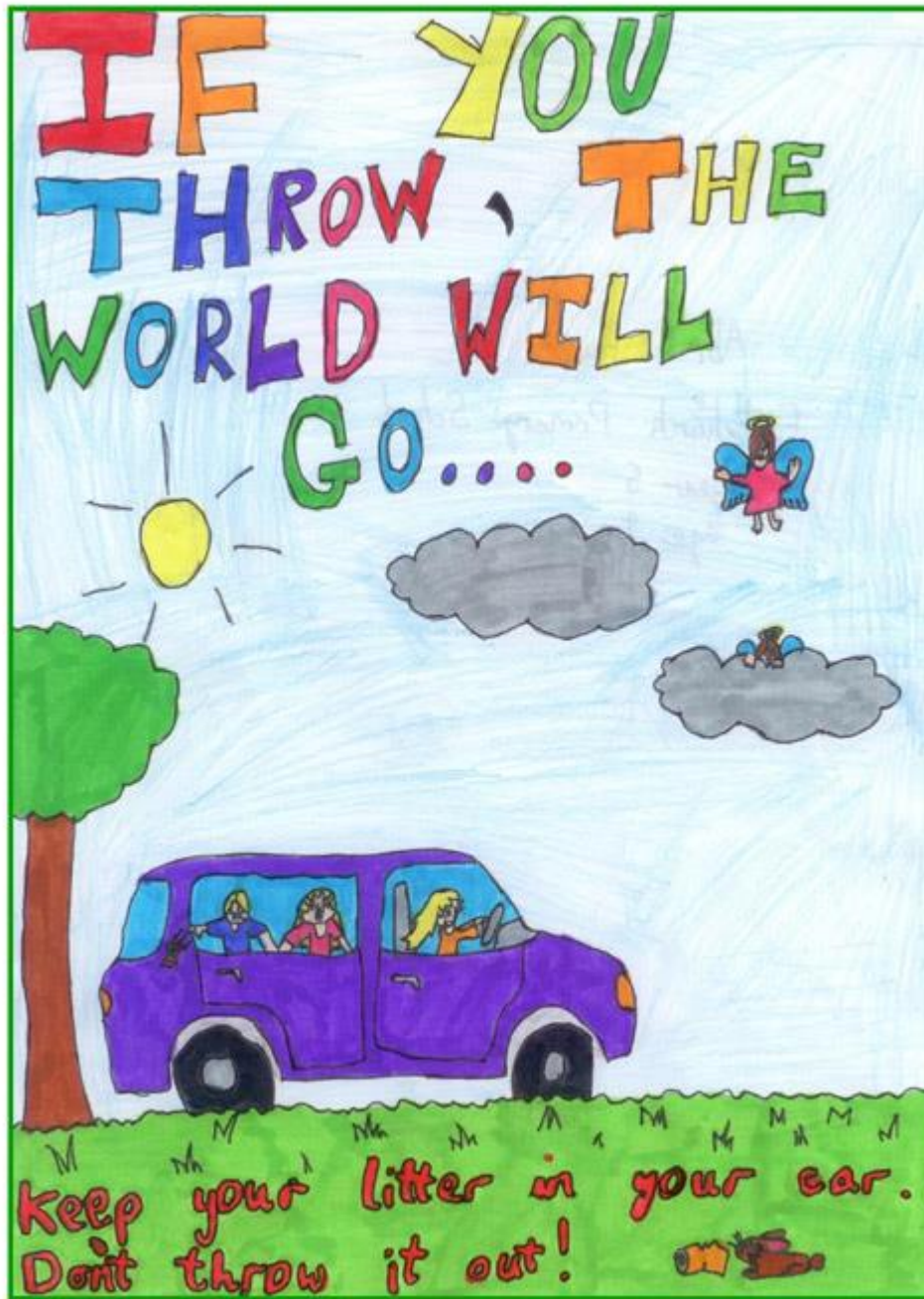
PSHE

LO I can recognise the negative effects of litter

When you go out for your walk with your adult, visit a local park, beach or woods. Identify any litter you can see and talk about how it makes you feel. When you get back inside make a poster to warn people not to drop their litter. Here are some examples for you to look at.



(postponed)



LitterAngels
2014

Poster designed by Abi Hunt, aged 9, from Eastchurch CofE Primary School



Good luck and enjoy