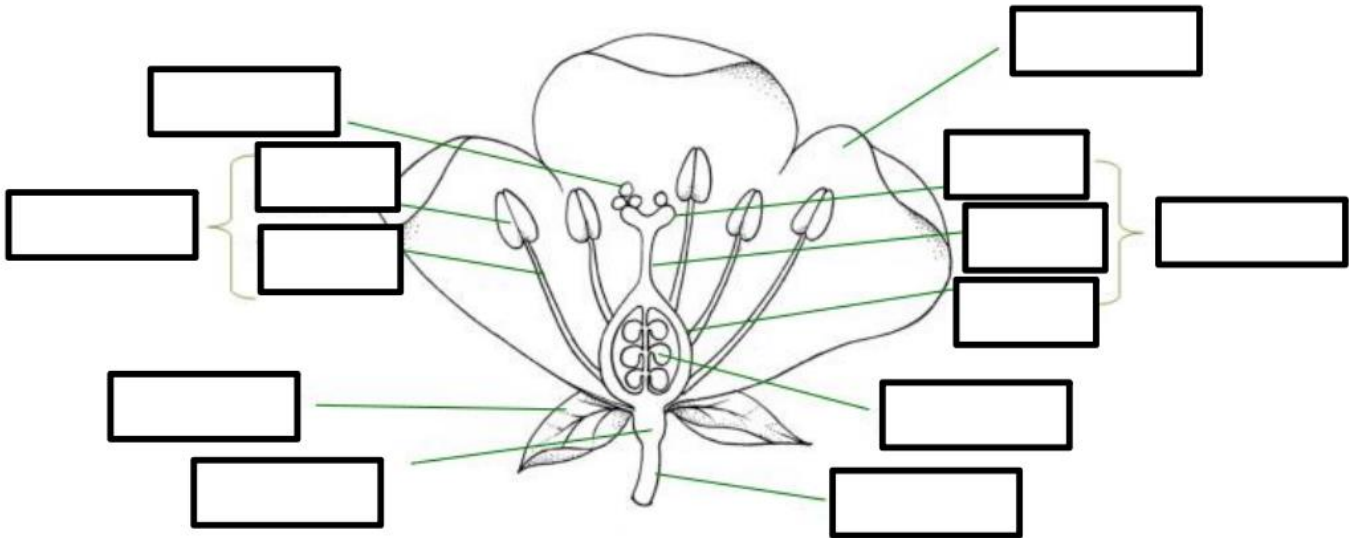


Name: _____

Please research the names for the different parts of a flowering plant and complete the labelled diagram below. There is an information table to help you.

There is also a great BBC Bitesize lesson on this: www.bbc.co.uk/education/guides/zs7thyc/revision

LO: I can label a diagram of a flowering plant.



	Part	Function
1	Anther	Contains the pollen sacs
2	Carpel	The female part of the flower (made up of the stigma, style and ovary)
3	Filament	Supports the anther
4	Ovary	Contains the ovules
5	Ovule	Contained in the ovary and will develop into seeds when fertilised
6	Petal	Often large and coloured to attract insects
7	Pollen	Contains the male cells for fertilizing other flowers
8	Receptacle	The thickened part at the top of the stem from which the flower organs grow
9	Sepal	Protects the flower while in bud
10	Stalk (petiole)	Supports the flower
11	Stamen	The male parts of the flower (made up of the anther and filament)
12	Stigma	The part of the carpel where the pollen germinates
13	Style	Links the stigma to the ovary

Please test what you have learnt by taking the quiz at the end of the BBC Bitesize lesson and make a note of your best score

I scored _____/10 on the BBC Bitesize quiz