

# California Regions

## Fact Cards



twinkl

## Coastal Region



The California coast stretches 1264 miles along the state. In the southern part of the state, the weather is warm in summer and mild in the winter. The northern part of the coast is wet and cooler. The southern coast has sandy beaches and warm water, while the northern coast has rocky beaches and cold water.

## Desert Region



The Desert Region of California includes three deserts: the Mojave Desert, the Colorado Desert and the Great Basin Desert. The climate of the Desert Region is hot and dry with the hottest temperature on Earth being recorded in Death Valley at 134 degrees. The Great Basin Desert is the only 'cold' desert in the USA. This means it receives its precipitation from snow. The Desert Region is located in the southern part of California.

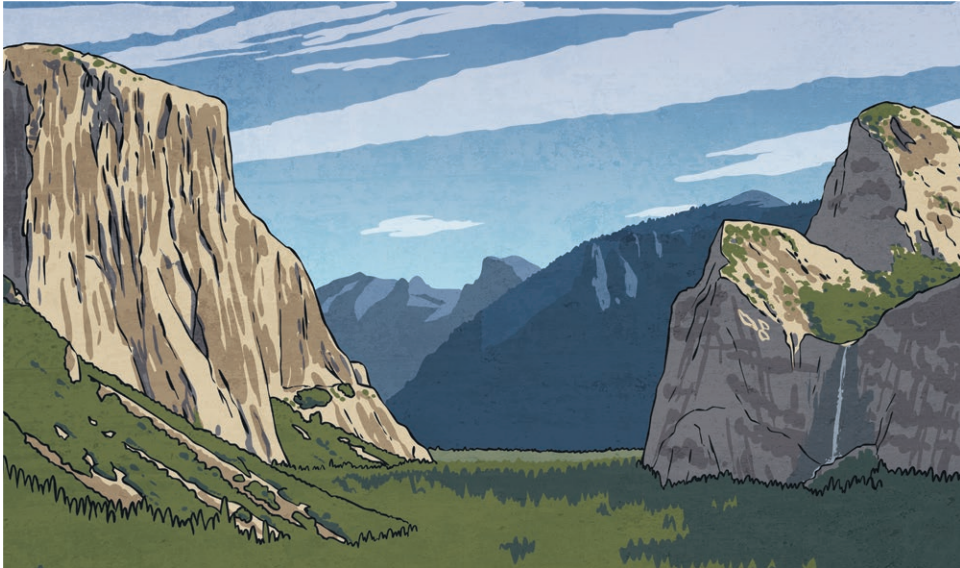
## Valley Region



The Valley Region is located in central California. This region produces one-half of the world's vegetables, fruits, and nuts. The Valley Region has a hot Mediterranean climate. The Valley Region produces 90% of the world's almonds each year.



# Mountain Region



The Mountain Region of California is located in the north part of the state. The climate in this area is cool, foggy, and moist. The mountain area is a top producer of timber, wines, and nuts. The Mountain Region contains mountains, valleys, rivers, lakes, and streams. The highest elevation in continental USA is located in California on Mount Whitney with an elevation of 14,491 feet.