



BRITISH
SCIENCE
WEEK
2022



WONDERFUL WORKING WORMS

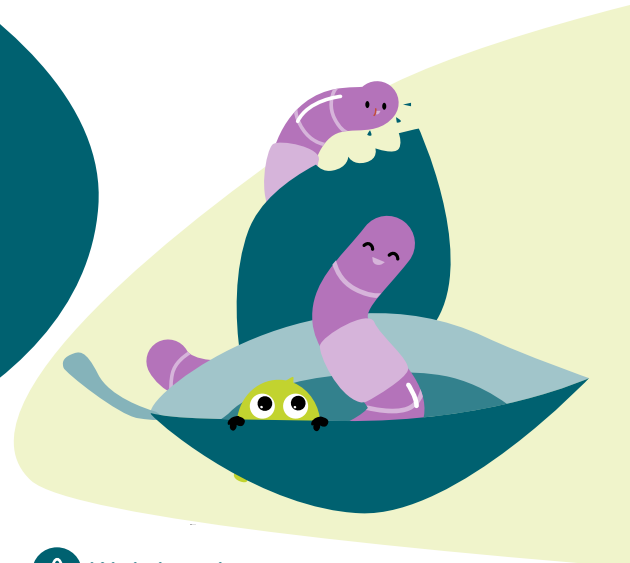
Worms are incredible recycling engineers, creating super soil for everything that grows, including trees, flowers and all the foods we eat. In this activity, you will use your senses to explore the soil in your garden, school or local park and learn about the hidden world of wonderful, working worms.

🕒 20-30 minutes

Skill set: Curious, observant, patient



Country Trust
Where children learn and grow



Kit list

Spade, trowel or a sturdy spoon

Tray or pot

"The Three Types of Earthworms" sheet

Spray bottle of water or some big leaves



Instructions

- 1 Use the "Three Types of Earthworm" sheet on the next page to decide where to look for worms.
 - a. Under logs, stones, trees or hedges for surface dweller worms
 - b. In flower or vegetable beds for earthworker worms
 - c. On lawns or playing fields, where worm casts are evidence of deep burrowing worms
- 2 Use your spade, trowel, spoon or hands to explore the leaf litter and dig the soil.
- 3 Carefully place worms in the tray for a closer look. Keep them cool with a light spray of water or give them leaves to hide underneath.
- 4 Get curious:
 - a. How long is your worm?
 - b. What colour is your worm?
 - c. What type of worm have you found?
 - d. How does your worm move?
 - e. Has your worm done a poo? Worm poo is plant fertilizer and makes plants grow!
- 5 Put the worms back where you found them, so they can keep recycling and making super soil for plants to grow.



Watch out

- Dig carefully
- Wash your hands after touching worms and soil.
- Look out for any litter, glass or sharp items where you are searching.
- Ask for permission before you dig up lawns and playing fields.



Next steps

Visit the Country Trust website to find out more: countrytrust.org.uk/what-we-do/landing ✨



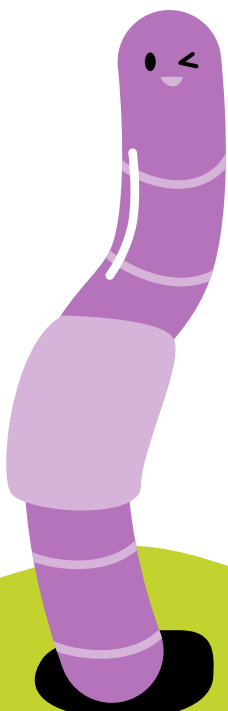
At home

Try making compost from your kitchen peelings and garden waste. You can use the compost to grow your own amazing plants and flowers.



Career options

Soil scientists study how soil impacts our lives including food production, water storage, nutrient cycles, carbon capture and waste disposal. Agronomists work with farmers to help them grow healthy crops. Wildlife and environment officers look after wild plants and animals. Horticulturists grow food, flowers and vegetables.



The Three Types of Earthworm

Surface Dwellers (Epigeic worms)

Dark, red headed worms

They live in the leaf litter or under logs and stones

They eat dead leaves, twigs and old plant debris

Worm poo!

Also known as 'worm castings'
Created by deep burrowing worms

Earthworkers (Endogeic worms)

Small, pale blue, green or grey worms which curl up tight when disturbed

They live in horizontal burrows in the top 20 cm of soil

They eat soil and organic matter

Deep Burrowers (Anecic worms)

Long fat pink worms

They live in vertical burrows up to two metres deep

They eat leaves and plant debris from the surface which they draw down into their burrows

centimetres underground

0
50
100
150
200



Country Trust
Where children learn and grow

© 2021 The Country Trust. Charity No. 1122103